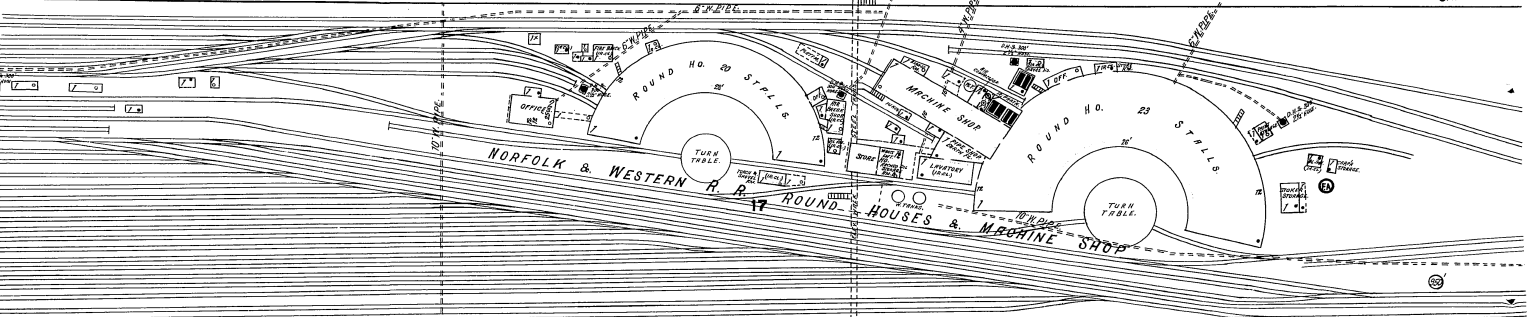


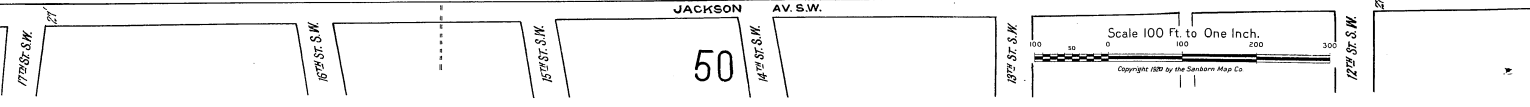
76

82

78



NO WATCHMAN-EMPLOYEES ON DUTY NIGHT & DAY-POWER: STEAM & ELEC.-LIGHTS: ELEC.-HEAT: STEAM SERVICES-4 D.W.S. IN BLDG WITH 200 G.P.W. FIRE EXTING. SUPPLIES ON CITY WATER, 1000 GAL. CAPACITY PUMPER(S) & 1-STEAM PUMP AND GEAR IN PUMP RM. SUPPLY SERVICE 11:00-12:00 AM. EXCESS WASTE-OIL-UNGRADED STEEL PILES IN OIL RM. WASTE OIL-STEEL PILES IN OIL RM.-4 CRACKS & PILES IN MACHINE SHOP-STEELWORK LEADING TO 8th-UNGRADED TIME SWIVEL CHIEF & 12th- WHISTLE BLANK-FLOOR BOX ON PREMISES-



50

Scale 100 Ft. to One Inch.

Copyright 1926 by the Sanborn Map Co.