

Population 60,000, including suburbs.

Prevailing Winds, West and South West.

Street pavements are shown on detail sheets, those not indicated are dirt roadways. Public lights electric.

**WATER FACILITIES.** Water works owned by two private companies. The two pipe systems are controlled by an emergency valve at Broad St. and 4th St., see sheet 107.

**ROANOKE WATER WORKS.** Three pumping system supplies the principal dwelling and mercantile sections. Water supply from Crystal Springs (see sheet 107) minimum flow 15 million galls per day. Water from springs flows into storage basin, capacity three million galls. It is then pumped directly into distribution mains by one Sinton-Curtis cross compound duplex steam pump, capacity 3 million galls per day. In reserve, two two-inch gasolene compound duplex steam pumps, capacity one million galls per day. Tested weekly.

A reservoir of two million galls, capacity fed by springs, located on West side of Mill Mountain 300 ft above pumping station. It is 60 ft in diameter and 15 ft deep. It supplies 30 miles of water pipes, 4 1/2 to 20 inch, 362 double and triple hydrants.

Pressure 80 lbs. per sq. inch in business section. Average daily consumption 4 1/2 million galls.

**VINTON-ROANOKE WATER CO.** Gravity system. Constructed 1898. Supplies most of the manufacturing district and lower parts of the dwelling and mercantile sections. Water supply from reservoir on Mill Mt., 1.5 miles east of Roanoke, capacity 125 million galls, and a smaller reservoir on Beaver Creek, the combined supply is about 3 million galls. Elevation of reservoir is about 300 ft above business section. Pressure is controlled by one 10" Muller regulating valve.

A steel stand pipe at Vinton (see sheet 107) capacity 183,500 galls, is used only when necessary to replace the regulating valve.

This company also has a small reservoir of 252,000 galls, capacity fed by springs and by pumping station at Vinton with one chance steam pump, capacity 100,000 galls per day.

Five miles of water pipes, 4 1/2 to 10" diam, belonging to this system and shown on detail sheets, thus a total of 10" diam.

35 hydrants. Average pressure, 70 lbs. per sq. inch.

**FIRE DEPARTMENT.** Fully paid. Six stations, Headquarters at Station No. 1.

**STATION NO. 1.** Located at 15-18 Church St. E. (Sheet 107). One chief and 21 men. One Seagrave 60 ft auto, triple combination pumping engine, capacity 750 galls per min. 80 gal. chemical tank and hose wagon with 750 ft. 2 1/2" hose. One Seagrave 80 ft auto, hook and ladder truck with 85 ft of ladders. One Seagrave 80 ft auto, water tower. One Seagrave Chief's auto.

Each machine carries two 3 gal. chemical extinguishers. Reverse couplings. In reserve, one Continental steam fire engine, capacity 1000 galls per min. One American fire engine, capacity 250 galls per min. One Seagrave motor driven combination hose wagon and 40 gal. chemical tank, 1000 ft. 2 1/2" hose.

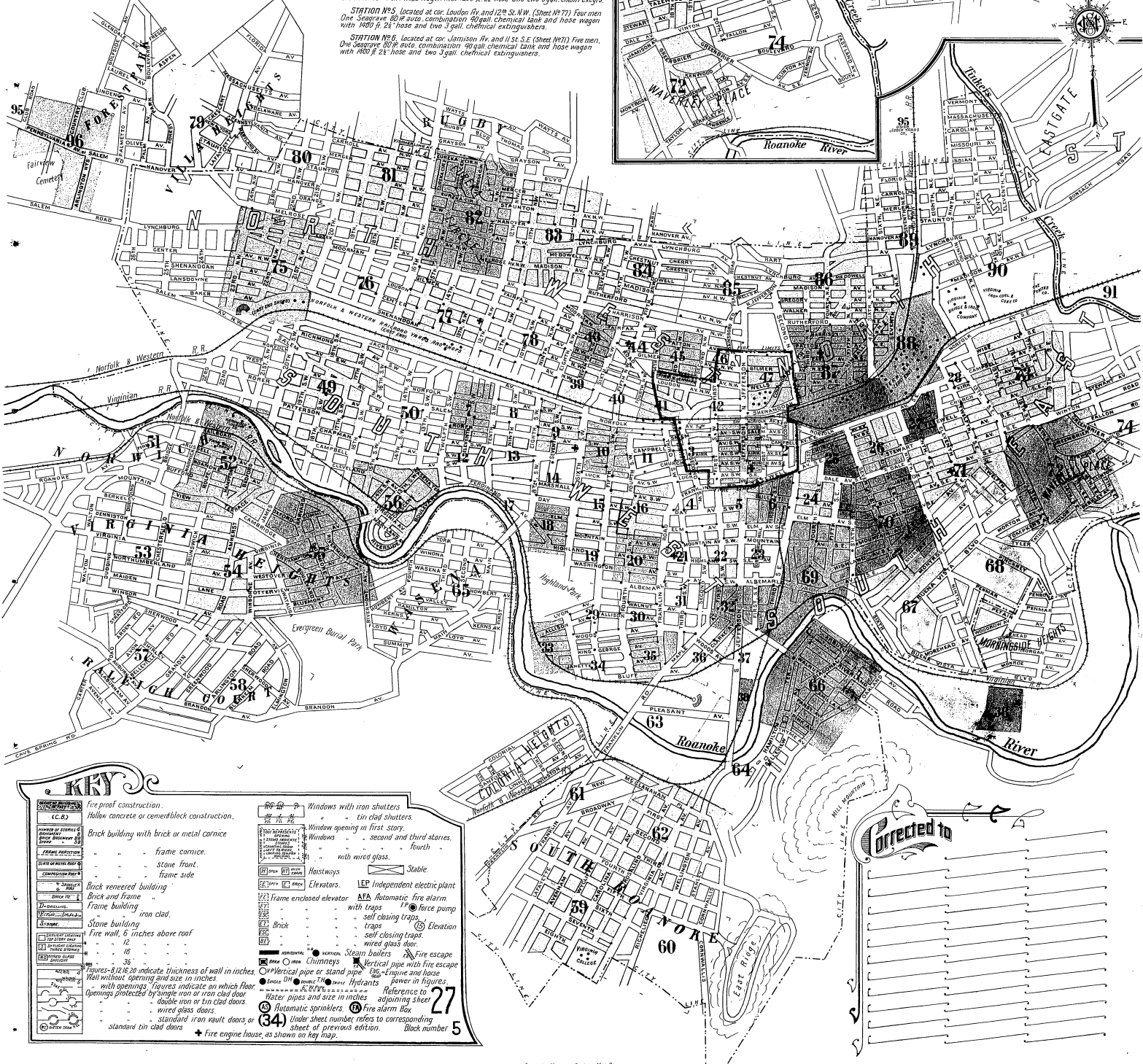
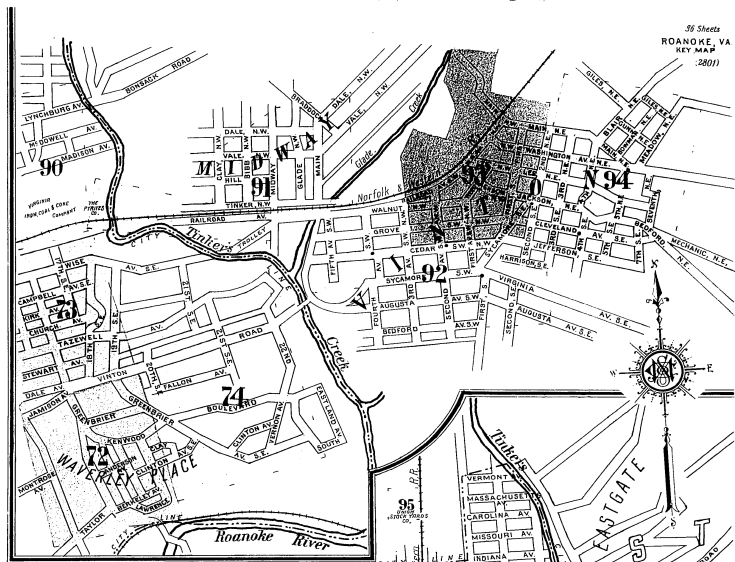
**STATION NO. 2.** Located at cor. East Ave. and Fourth St. N. E. (Sheet 107). Six men. One Seagrave 80 ft auto, triple combination pumping engine, capacity 750 galls per min. 75 gal. chemical tank and hose wagon with 750 ft. 2 1/2" hose. Two 3 gal. chemical extinguishers. In reserve, 1000 ft. 2 1/2" hose.

**STATION NO. 3.** Located at cor. Rorer Av. and Sixth St. S. W. (Sheet 107). Seven men. One Seagrave 80 ft auto, triple combination pumping engine, capacity 750 galls per min. 80 gal. chemical tank and hose wagon with 1000 ft. 2 1/2" hose. One Seagrave 80 ft auto, hook and ladder and 75 ft. derrick ladder truck with ladder pipe, catch machine carries two 3 gal. chemical extinguishers. In reserve, 1000 ft. 2 1/2" hose.

**STATION NO. 4.** Located at 323 Highland St. S. W. (Sheet 107). Six men. One Seagrave 80 ft auto, triple combination pumping engine, capacity 750 galls per min. 80 gal. chemical tank and hose wagon with 1000 ft. 2 1/2" hose. One Seagrave 80 ft auto, combination 90 gal. chemical tank and hose wagon with 1400 ft. 2 1/2" hose and two 3 gal. chemical extinguishers.

**STATION NO. 5.** Located at cor. Loudon Av. and 12th St. N. W. (Sheet 107). Four men. One Seagrave 80 ft auto, combination 90 gal. chemical tank and hose wagon with 1400 ft. 2 1/2" hose and two 3 gal. chemical extinguishers.

**STATION NO. 6.** Located at cor. Lamson Av. and 11 St. S. E. (Sheet 107). Five men. One Seagrave 80 ft auto, combination 90 gal. chemical tank and hose wagon with 1400 ft. 2 1/2" hose and two 3 gal. chemical extinguishers.



**KEY**

	Fire proof construction.		Windows with iron shutters.
	Hollow concrete or cement block construction.		Tin clad shutters.
	Brick building with brick or metal cornice.		Window opening in first story.
	Frame cornice.		Window opening in second and third stories.
	Frame side.		Window opening in fourth story.
	Brick veneered building.		Window with wired glass.
	Brick and frame.		Stable.
	Frame building.		Elevator.
	Stone building.		LEP Independent electric plant.
	Fire wall, 6 inches above roof.		A.F.A. Automatic fire alarm.
	Fire wall, 12 inches above roof.		F.P. Force pump.
	Fire wall, 36 inches above roof.		S.C.T. Self-closing traps.
	Chimney.		Traps.
	Vertical pipe or stand pipe.		S.C.T. Self-closing traps.
	Hydrant.		S.B. Steam boilers.
	Water pipes and size in inches.		F.E. Fire escape.
	Automatic sprinklers.		V.P. Vertical pipe with fire escape.
	Fire alarm box.		E.H. Engine and hose.
	Under sheet number refers to corresponding sheet of previous edition.		R.A. Reference to adjoining sheet.
	Fire engine house as shown on key map.		W.P. Water pipes and size in inches.

Corrected to